

District Rural Development Cell

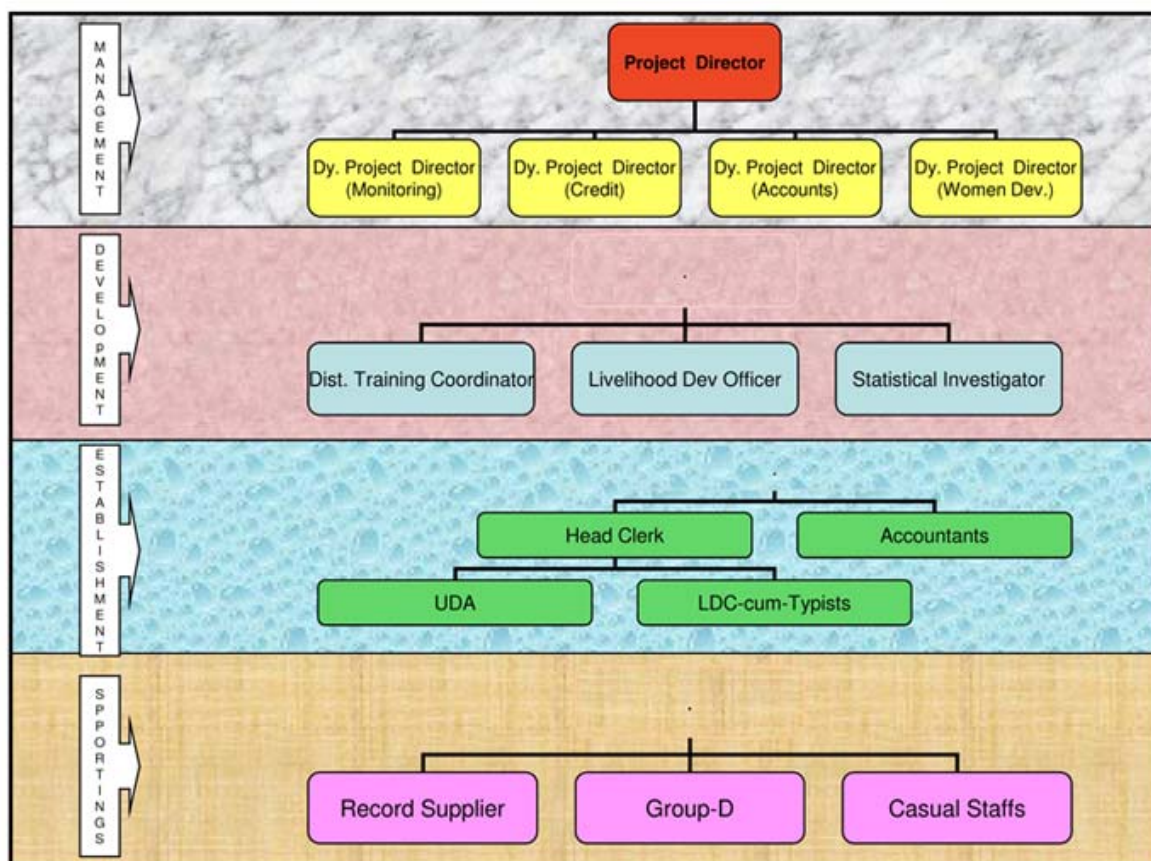
Organizational Structure

The state Government, after due deliberation, has come to the decision that the power responsibility for implementation of the self-Employment programme since rename as Swarnajayanti Gram Swarajgar Yojona (SGSY) components of poverty alleviation programme should henceforth be entrusted upon the Zilla Parishads vide memo no. 1138/PN/0/III/ZE-52/99, dated Calcutta, 22nd March 2000. It has simultaneously been decided by the state Government that the District Rural Development Agency (DRDA), earlier constituted for the purpose of implementation of the aforesaid scheme, shall be merged with the respective Zilla Parishad and renamed as District Rural Development Cell with effect from 01st April 2000.

District Rural Development Cell (DRDC) consisting of the officers and members of staff absorbed in the posts created under of this state in the Zilla Parishads be set up in the respective Zilla Parishads to look after SGSY and other related poverty alleviation programmes. The DRD Cell shall be headed by the project Director /Additional Project Director assisted by the Deputy Project Director of all disciplines and shall function under the overall control & supervision of the Executive Officer /Additional Executive Officer of Zilla Parishads. The posts so created and sanctioned for this purpose in the DRD Cells, are as under:-

SL No.	Name of the Post	Scale of pay	Number of posts created
1	Project Director, DRD Cell	Grade pay of WBCE(Ex)	1(one)
2	Additional Project Director, DRD Cell	Grade pay of WBCS(Ex)0	Nil
3	Deputy Projector, DRD Cell(Monitoring)	Grade pay of WBCS(Ex)	1(one)
4	Deputy project Director(WD)	Grade pay of WBCS(Ex)	1(one)
5	Deputy Project Director(Credit)	Grade pay of W.B. Coop. Service	1(one)
6	Deputy Project Director, DRD Cell(TRYSEM& Rural industries)	Grade pay of Sr. Manager DIC	1(one)
7	Deputy Project Director, DRD Cell(Agriculture)	Grade pay of Agri. Service Other	Nil
8	Finance Officer, DRD Cell	Grade pay of WBA &AS officer	1(one)
9	Head Clerk, DRD Cell	1260-2610/+Rs.80Spl pay	1(one)
10	Accountant, DRD Cell	1260-2610/-	3(three)
11	Investigator, DRD Cell	1260-2610/-	2(two)
12	Stenographer Sch(B),DRD Cell	1260-2610/-	1(one)
13	Upper Division Clerk, DRD Cell	1260-2610/-	Nil
14	Statistical Assistant, DRD cell	1260-2610/-	Nil
15	LDC-Typist, DRD Cell	1040-1920/-	4(four)
16	Investigator LDC, DRD Cell	1040-1920/-	Nil
17	Driver, DRD Cell	1040-1920/-	2(two)
18	Duplicating Machine Operator, DRD Cell	920-1617/-	Nil
19	Record supplier, DRD Cell	875-1460	1(one)
20	Group-D, DRD Cell	800-1265/-	1(one)
21	Night Guard, DRD Cell	800-1265/-	Nil
22	Chowkidar, DRD Cell	800-1265	1(one)

However, like other DRD Cells of West Bengal this office of Uttar Dinajpur Zilla Parishad came up with its maneuvering strength in Rural Development and functional structure has been developed as below -



Block Set – Up: Women Development Officers and Gram Sevikas:-

Execution of DRDC programmes at Block level are entrusted upon the Women Development officers and the Gram Sevikas posted at the concerned blocks under the leadership of Block Dev. Officers. WDO is to head the cell of SGSY (block) and the Gram Sevika, if posted, along with the WDO, otherwise, shall play the pivotal role in execution, implementation, supervision and monitoring. However, in the lower tier at grassroot levels, there are the Resource Persons, working as and when required basis in different Panchayats. They are the trained persons who intern nurture, monitor and assist the SHGs to enhance their socio-economic strength and play pivotal roll towards sustainable livelihoods of the society.